

**Building Strong®** *DISCOVER | DEVELOP | DELIVER*

# Reachback Engineer Data Integration (REDi)

## Reachback Data Management

The Reachback Engineer Data Integration (REDi) system provides a common database, robust user interface and fully integrated mapping tools for receiving, managing, tracking, and archiving engineering reachback, project and infrastructure related data. REDi was initially developed to support the reachback engineer data management requirements of the USACE Reachback Operations Center (UROC) involving many thousands of requests for information (RFI) that the UROC receives and manages annually. The system has since expanded and is currently used by the US SOUTHCOM J45 Engineer Division, US Army Pacific ACSENG, USACE Transatlantic Division, USACE Northwestern Division, USACE G2, the USACE Field Force Engineering program, and others. The REDi system is replicated on the unclassified, CENTRIXS-K and SIPR networks.

## System Features

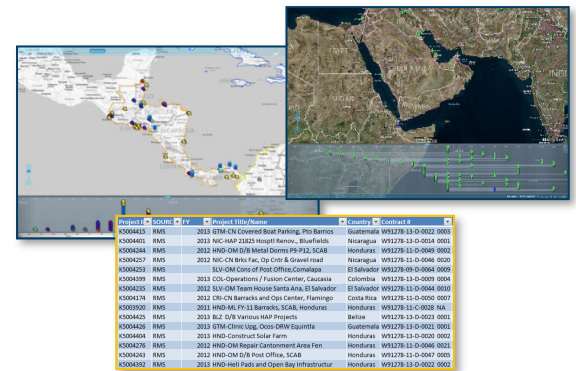
REDi is developed within the SharePoint environment and couples the wide array of standard SharePoint features with custom-designed tools to provide a versatile web-based application including alerts, automated email functions, custom form creation and many other capabilities. Access to REDi on the unclassified network is available for Department of Defense (DoD) Common Access Card (CAC) holders, and a multilevel permission structure provides flexibility for various user groups. The REDi interface provides search and query tools for consolidated viewing, managing, and tracking of construction projects and status, engineering reachback data, emergency management, intelligence reporting, and other information relevant to the engineer missions. Fully integrated mapping tools allow for data to be spatially located and data from external sources such as USACE project databases (RMS, P2) are merged to provide a complete picture of engineer-related activities.

## Custom Portal Development and Support

The components of the REDi system are easily adapted to meet data management requirements for a variety of engineer missions. To date, the UROC has developed custom portals within the REDi architecture for the USACE G2, USACE Field Force Engineering Program, USACE Transatlantic Division, CENTCOM J4 Engineers, USARPAC ACSENG, Army Facilities Components System, and others. Custom features, tools, permissions, and site layout are provided for each portal while taking advantage of a single common overall hardware and software system architecture. The UROC provides full system and customer support, data backups, replication to SIPR network as requested, and ensures compliance with applicable network and information assurance requirements and policies.



**REDi Web Portal – Access requires DoD CAC**



**Fully integrated mapping tools for engineering data**

**Contact: 601-634-2439 / DSN 312-226-1051**

**[uroc@usace.army.mil](mailto:uroc@usace.army.mil) / [uroc@mail.smil.mil](mailto:uroc@mail.smil.mil) / <https://redi.usace.army.mil>**

The U.S. Army Engineer Research and Development Center (ERDC) solves the nation's toughest engineering and environmental challenges. ERDC develops innovative solutions in civil and military engineering, geospatial sciences, water resources, and environmental sciences for the Army, DOD, civilian agencies, and our Nation's public good. Find out more on our website: [www.erdcd.usace.army.mil](http://www.erdcd.usace.army.mil).  
Approved for public release, distribution is unlimited. September 2016.